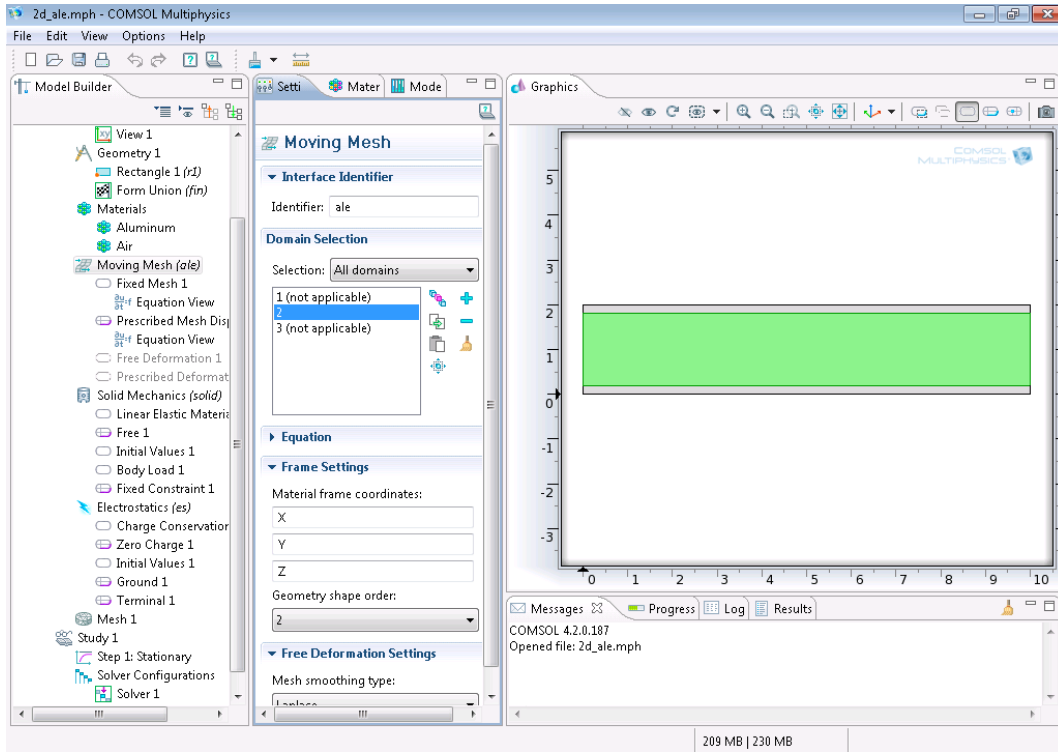
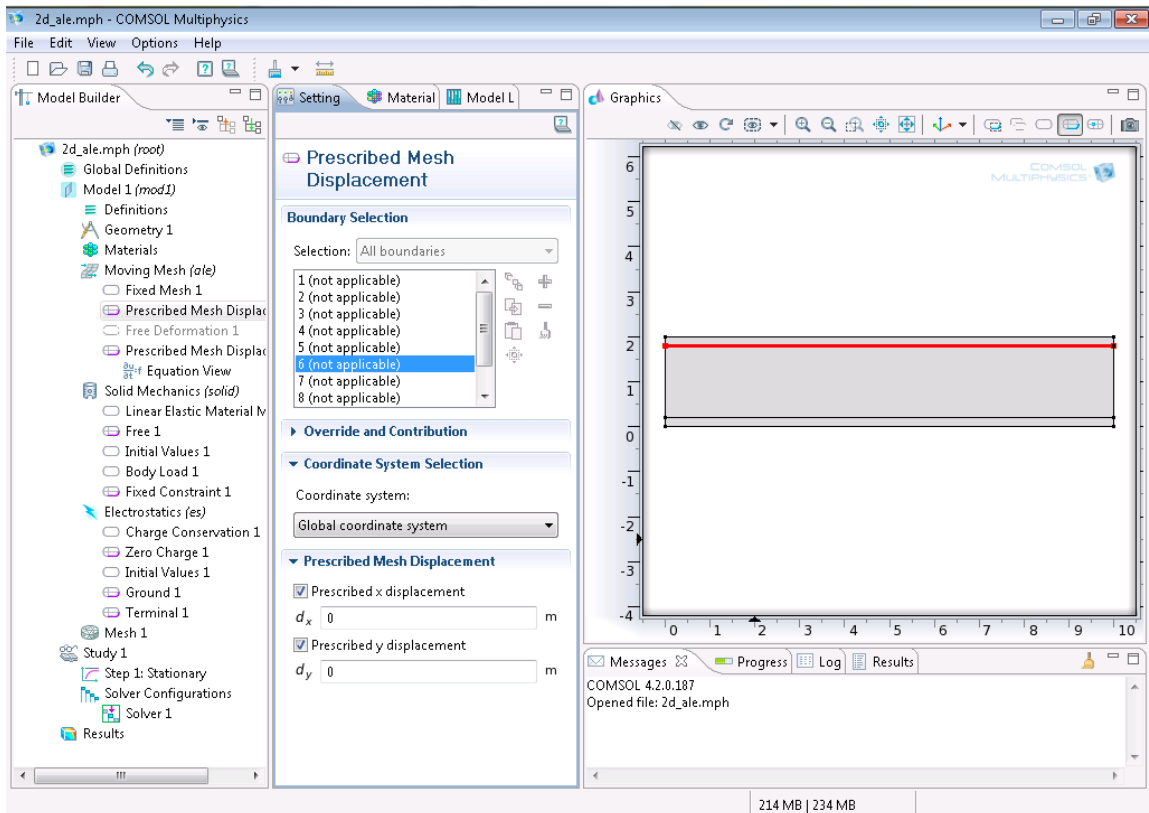


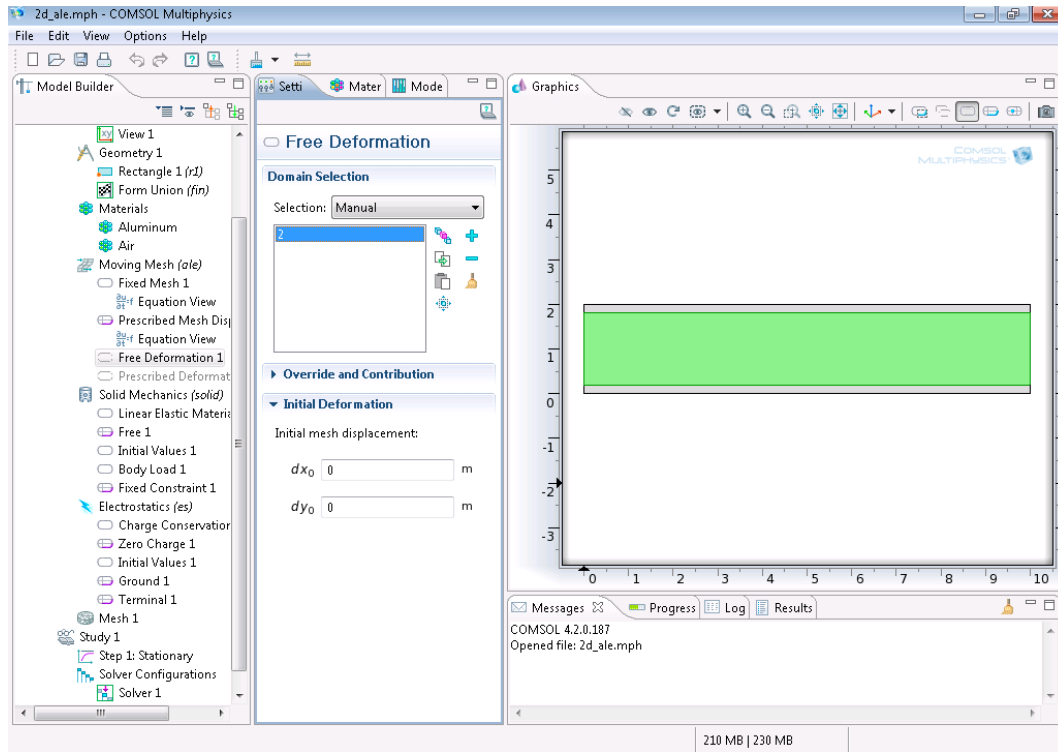
1) This is in the main physics node (ale), it says only domain 2 is applicable in ale



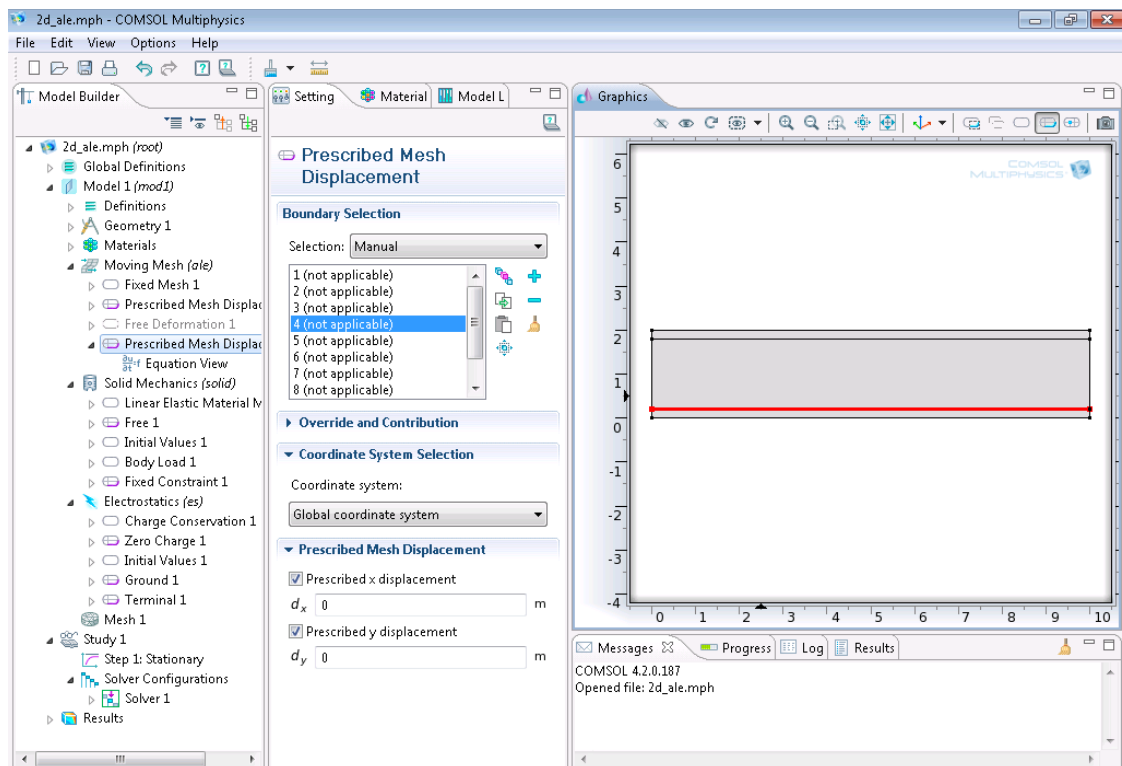
2) This is the the default boundary nodes



3) This is the free deformation node I added and assigned to DOMAIN 2



4) This is the node I added after the free deformation node, clearly as the default node, the two plates are applicable here



5) This is the “study 1” with step 1 stationary

All the three physics are checked, does it matter in which order? I think they just follow the order in the model list

