

Simulation of a Seal

Valerio Viola¹

¹CARCO, Basiano, Milano, Italy

Abstract

Simulations of more than one type of seal have been done where the deformation and the stress of the seal itself or the pressure on the housing are of interest. According to the deformation of the seal we can modify the housing of the seal or its geometry depending on the design constraints to meet. Stresses on the seal are indicators of which changes have to be implemented on the geometry so to keep them within acceptable levels. It's also of the essence to verify the pressure on the housing in order to check if there is contact on all the surfaces.

Figures used in the abstract

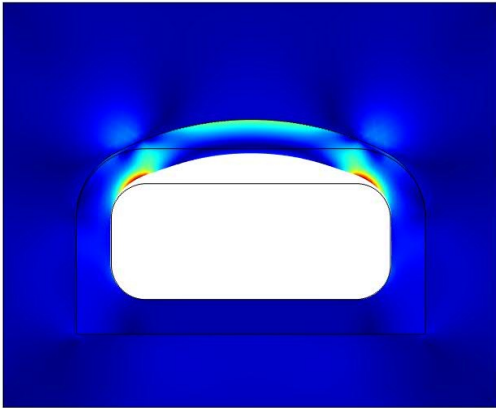


Figure 1

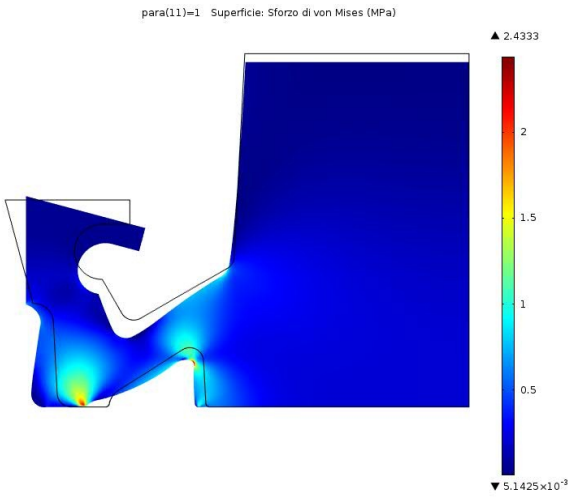


Figure 2

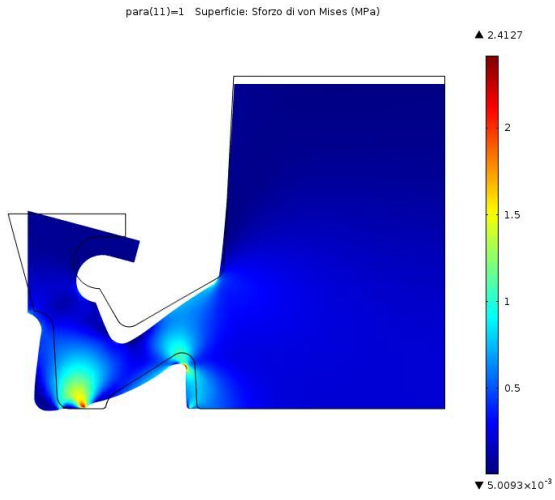


Figure 3

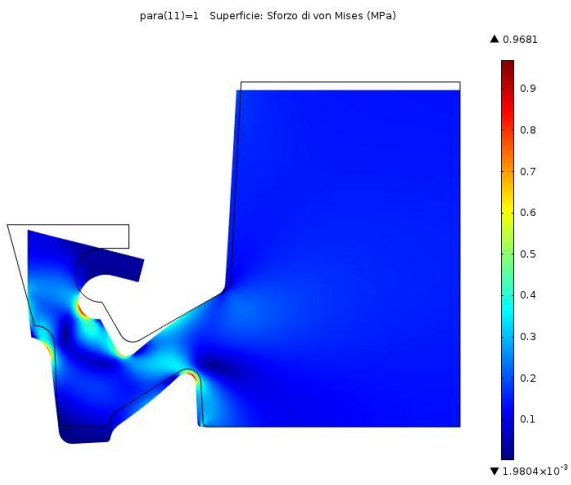


Figure 4